

Combi Chef 7

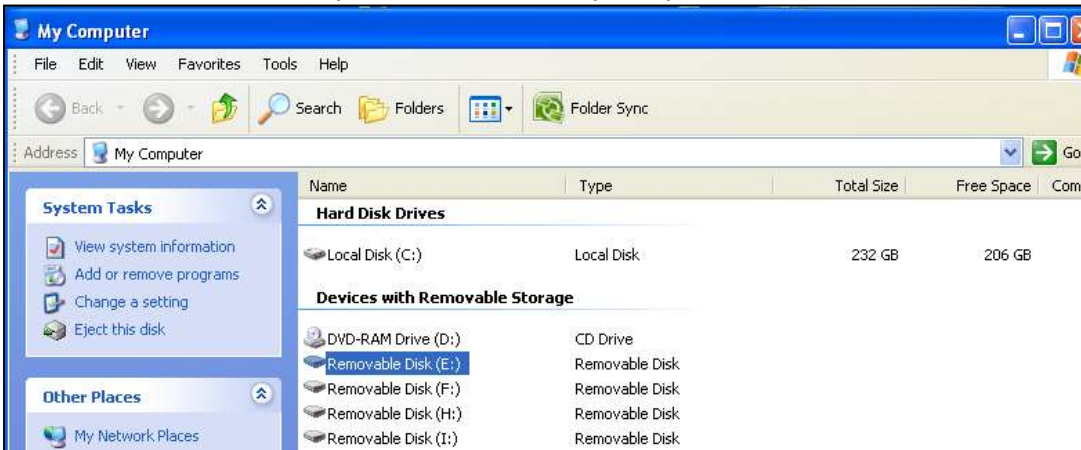
Storing Menu Creator 2.0™ data on SD Memory Card – Step by Step Guide

Note that the below is using Windows XP.

Screen appearances and options may vary depending on your operating system.

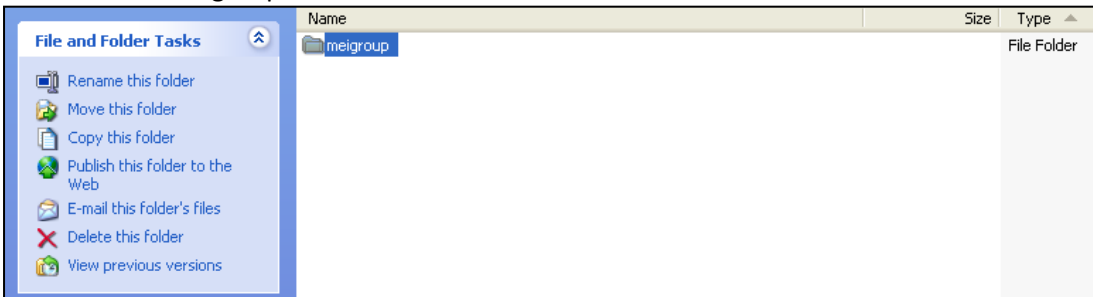
How to store Menu Creator 2.0™ data

1. Turn ON your computer/laptop and activate Windows
2. Insert an SD Memory Card into the SD Card Reader on your computer/laptop
3. Double-click the SD Memory Card drive in the 'My Computer' folder

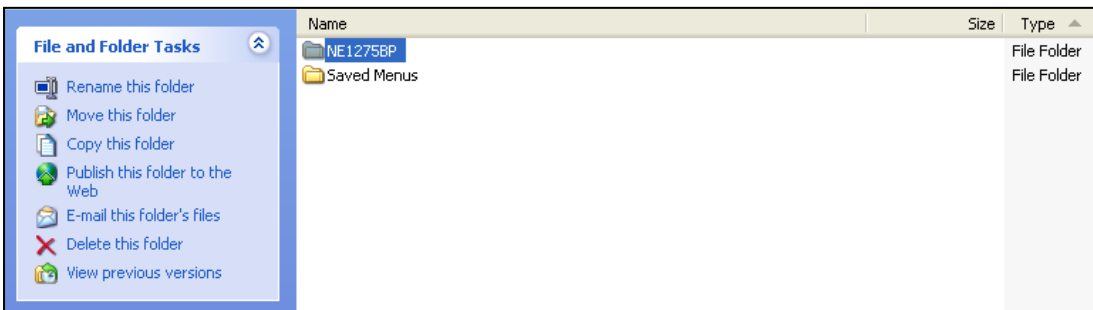


NB. Your computer/laptop may use a different device name

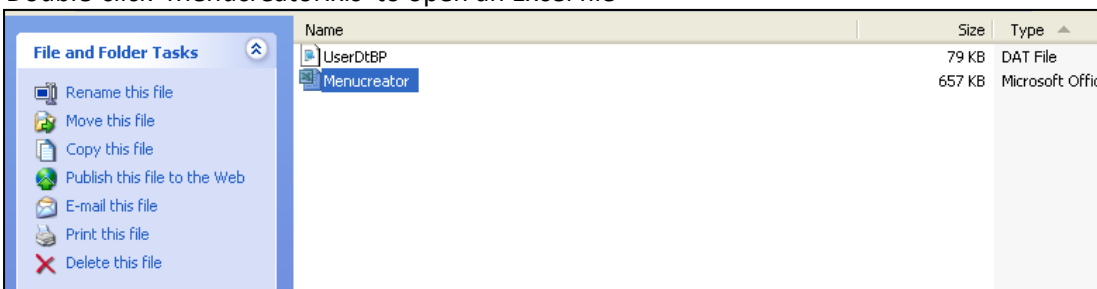
Double-click 'meigroup' folder



Double-click 'NE1275BP' folder



Double-click 'Menucreator.xls' to open an Excel file





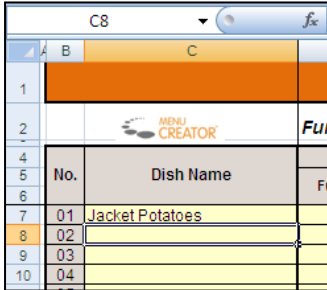
Combi Chef 7

4. 'User Cooking Data Sheet' appears on the desktop

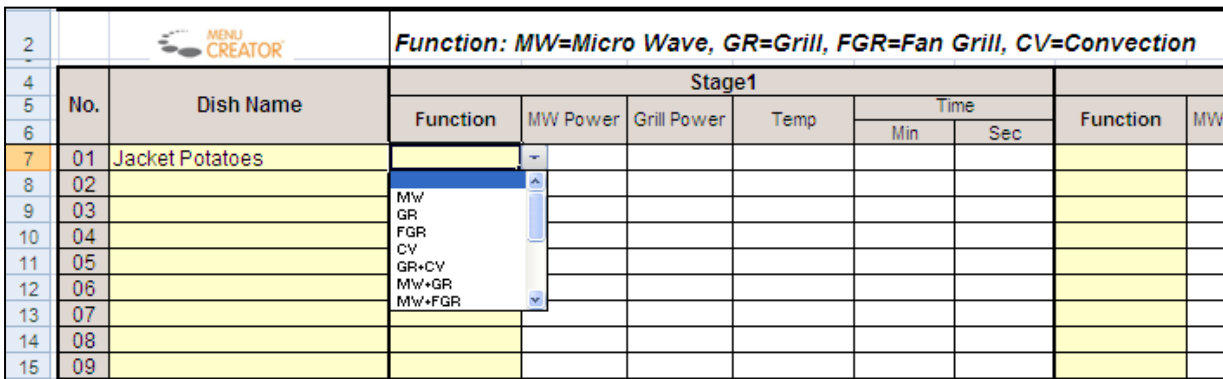


NB. On first use, a 'security warning' may appear (this will not appear from 2nd use onwards)
Tick the text box for 'Always trust macros from this source' and/or click 'Enable Macros'

5. Begin by entering your selected menu item in 'Dish Name'



6. Select the 'Function' cell, and a drop down menu will appear. Select the first required cook function from the drop down list (NB. A key to cooking functions appears at the top of the spreadsheet)



Combi Chef 7

7. Select options from the drop-down menus and enter the data for each required cooking stage of the program. The example below shows a Combination of Microwave (Medium) + Grill + Convection (200°C) for 5 minutes.

Microwave

4	5	6	No.	Dish Name	Stage1					
					Function	MW Power	Grill Power	Temp	Time	
									Min	Sec
7	01	Jacket Potatoes	MW+GR+CV							
8	02									
9	03									
10	04									
11	05									
12	06									
13	07									
14	08									

Grill

4	5	6	No.	Dish Name	Stage1					
					Function	MW Power	Grill Power	Temp	Time	
									Min	Sec
7	01	Jacket Potatoes	MW+GR+CV	Med						
8	02									
9	03									
10	04									
11	05									
12	06									
13	07									
14	08									

Convection

4	5	6	No.	Dish Name	Stage1					
					Function	MW Power	Grill Power	Temp	Time	
									Min	Sec
7	01	Jacket Potatoes	MW+GR+CV	Med	Default					
8	02									
9	03									
10	04									
11	05									
12	06									
13	07									
14	08									

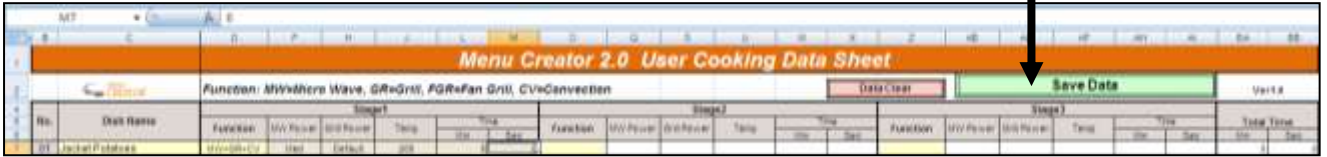
Time

4	5	6	No.	Dish Name	Stage1					
					Function	MW Power	Grill Power	Temp	Time	
									Min	Sec
7	01	Jacket Potatoes	MW+GR+CV	Med	Default	200	5	0		
8	02									
9	03									
10	04									
11	05									
12	06									
13	07									
14	08									

NB. The Menu Creator software will not allow you to enter data that is not applicable to the cooking function you have selected. Any non applicable options will be blacked out.

Combi Chef 7

8. When all program data has been entered, click 'Save Data'

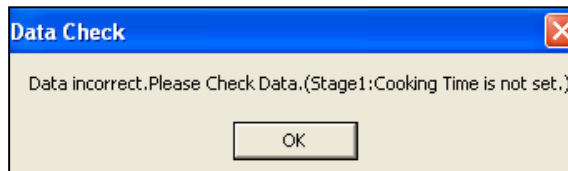
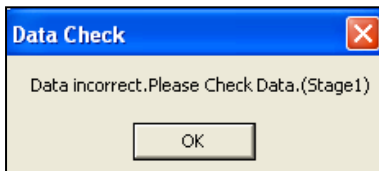


On the Confirmation screen, click 'Yes'



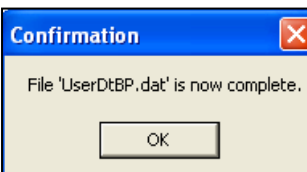
NB. If one of the following message appears, click 'OK'.

This indicates an error with the data that has been entered. The line with the incorrect data will be highlighted to indicate which program is incorrect. Correct the data and repeat as above.

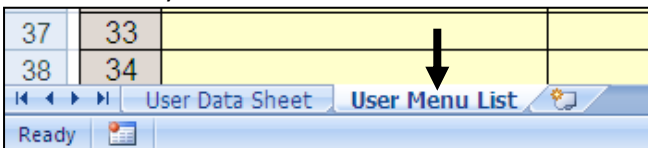


Menu Creator 2.0 User Cooking Data Sheet								
MENU CREATOR		Function: Error Menu No .. 01 /99						
No.	Dish Name	Stage1					Time	
		Function	MW Power	Grill Power	Temp	Min	Sec	
01	Jacket Potatoes	MW+GR+CV	Med	Default	200			
02								
03								
04								

9. Once any errors have been corrected and data has been successfully saved as above, the following message will appear and the program data entry will be completed.



The Dish Name that you have chosen will now appear in the 'User Menu List' (Tab 2 of the Excel workbook). Text can freely be entered in the 'Comment' column if required and this can be printed for reference.



Menu Creator 2.0 User Menu Sheet					
No.	Dish Name	Total Time		Comment	
		Min	Sec		
01	Jacket Potatoes	5	0		
02		0	0		
03		0	0		
04		0	0		

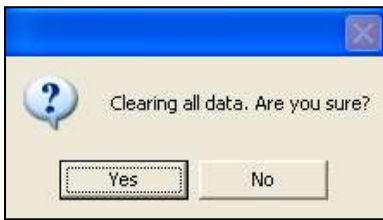
Combi Chef 7

How to delete the Program data

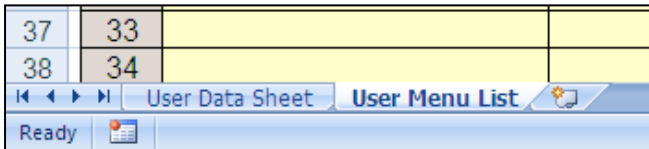
1. Follow steps 1 to 4 as shown in 'How to store Menu Creator 2.0™ data'
2. Click 'Data Clear'



3. Click 'Yes' on the Confirmation screen and all current program data will be deleted



NB. Data will be deleted from both the User Data Sheet and User Menu List tabs

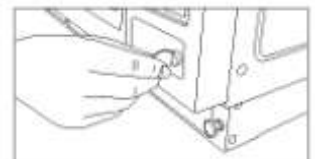


How to Insert or Remove the SD Memory Card

Before you insert or remove an SD Card, always disconnect the Combi oven from the power supply. If this is not possible, the display window should be blank. Failure to do this may result in the data on the card becoming damaged.

How to Remove

1. Unscrew the SD Card cover at the base of the control panel using a coin.
2. Push the SD Card with your finger tip to draw it out, then remove it.



How to Insert

1. Insert the SD Card with its label facing up as indicated by the arrow until it snaps gently into place.
2. Fit the left-hand edge of the SD Card cover then screw to close the right-hand side.

